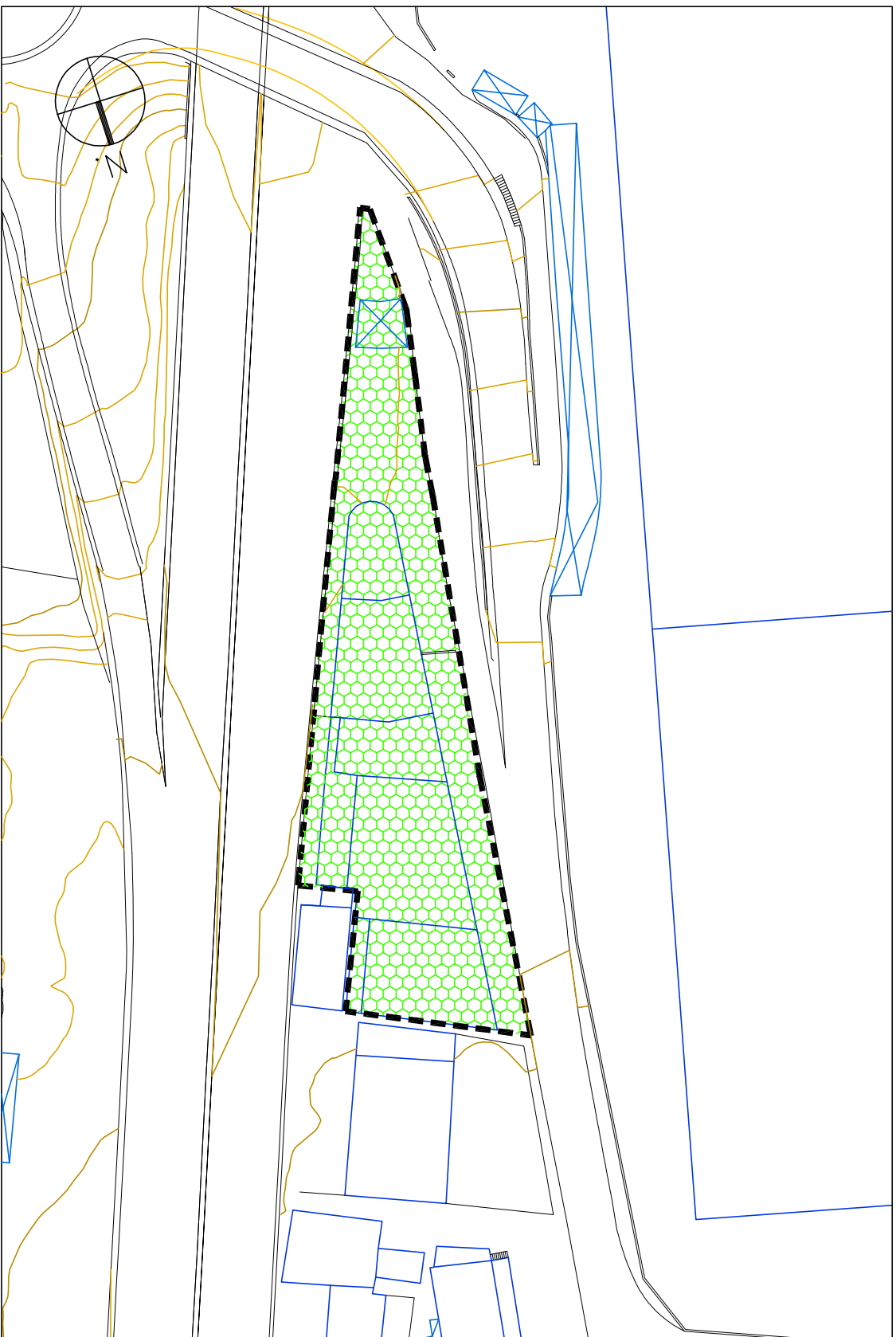


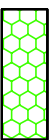
OLABERRIA



ARAU SUBSIDIARIOAK  
NORMAS SUBSIDIARIAS

AREA 13  
GASOLINDEGIA



 Z1. ZONAS INDUSTRIALES  
Y DE ACTIVIDADES ECONOMICAS.  
1.A. INDUSTRIA ETA EKONOMIA  
JARDUERA. ALDEAK  
[Z1C]

1:1000  
SUPERFICIE: 2.721 M2

A13.2  
KALIFIKAZIO OROKORRA  
ZONIFICACION GLOBAL